

# ENVIROSEAL™

## Food Processing Luminaires

### FES SERIES

#### PRODUCT FEATURES:

- » Ceiling or wall mount – 8"×24", 8"×36", 8"×48", 8"×96"
- » One-piece 20-gauge housing with UV-stabilized polycarbonate lens
- » IP65 option available
- » For Hazardous applications please refer to the HES series



#### PROJECT INFORMATION

Job Name \_\_\_\_\_

Fixture Type \_\_\_\_\_

Catalog Number \_\_\_\_\_

Approved by \_\_\_\_\_

#### SPECIFICATIONS:

**HOUSING:** One-piece, seam-welded 20-gauge CRS. Base provided with two-point mounting holes and one wireway hole. Lens is positioned in base-plate channels and retained with stainless steel fastener(s). Base mounts flush to ceiling or wall surface.

**LENS/GASKET:** UV-stabilized, pearlescent or clear polycarbonate. Smooth exterior, linear prismatic interior. Nominal thickness .125". Linear silicone gasket to seal doorframe to housing.

**FINISH:** Brushed stainless steel finish (#4B) or white TGIC polyester powder coat – 5-stage pre-treatment; Salt spray test: 1,000 hours; Reflectance: 92%.

**SOCKETS:** Shock-resistant sockets with internal locking collar to ensure positive lamp retention.

**HARDWARE:** Two Type 302 stainless steel Phillips head fasteners secure lens in housing channel.

**ELECTRICAL:** LED; Available 3000K, 3500K, 4000K and 5000K color temperatures, 82 CRI. 120-277VAC or 347VAC, 50/60Hz electrical input with serviceable high power factor electronic, constant-current driver (<20% THD, >0.95 PF). Standard 0-10V dimming with 1-100% range and dim-to-dark capabilities (non dim-to-dark with 347V); 330 µA max. source current. LF: Class P ballast. Fluorescent electronic 120/277 or 347 voltage ballasts, high power factor. Optional one-lamp 90 minute nickel-cadmium battery pack (EL) includes inverter charger, test switch and charging indicator lamp.

**SENSOR & CONTROLS:** Optional sensor available with compatible third party controls. To see the full list of compatible controls, [click here](#).

**PHOTOMETRICS:** Photometry tested to the IESNA LM-79-08 standard by an ILAC/ISO17025 accredited laboratory. For additional photometric data, please go to [www.kenall.com](http://www.kenall.com).

**WARRANTY:** Limited five (5) year LED warranty. [Peace of Mind Guarantee against breakage](#).

**LISTINGS:** UL and CUL listed for Wet Location – ceiling mount covered ceiling. UL and CUL listed for Damp Location – horizontal wall mount. Optional UL certified IP65 per IEC 60598 (IP65 Option) – ceiling mount. NSF2 Splash/Non-Food Zone listed. Rated for use in FED-STD 209E/Class 1 (ISO 3) Cleanrooms. Luminaire tested to an IK10 impact protection rating per IEC 60068-2-75:1997-08.



#### ORDERING INFORMATION (Ex: FES8-48-45L50K-DCC-1-DV-2H-PP-FS)

Model	Length	Lamp Qty/Type	Ballast/Driver Type	Ballast/Driver Qty	Voltage	Housing	Lens Type	Options
<b>FES8</b>								
<b>Nominal Length</b>			<b>8' Lengths (Lamp Qty per 4' Cross Section)</b>			<b>Voltage</b>		<b>Options</b>
24	2'		1-45L30K	45 Watt 3000K LED	DV	120-277 Volts	LEL <sup>▲</sup>	LED Emergency Battery Backup (45L Lamp Type Only)
36	3'		1-45L35K	45 Watt 3500K LED	347	347 Volt	EL*‡	Standard Lumen EL Pack (450 lumens) (n/a LED)
48	4'		1-45L40K	45 Watt 4000K LED			PEL*‡	High Lumen EL Pack (1100 lumens) (n/a LED)
96	8'		1-45L50K	45 Watt 5000K LED			SEL*‡	Specified EL Pack (n/a LED)
<b>Lamp Qty/Type</b>					<b>Housing Options</b>		FS	Single Fuse & Holder (n/a with 347V)
<b>2' Lengths</b>			1-67L30K 67 Watt 3000K LED		2H	20-Ga CRS; Painted	HC <sup>^</sup>	Row Mount Hub Connector (see KO option)
2-14 <sup>▲</sup> F14T5			1-67L35K 67 Watt 3500K LED		P5H	20-Ga 304SS; Painted	KO <sup>^</sup>	Continuous Row Mount - .875" diameter knockout in end caps (see HC option for Kenall supplied attachment connector)
2-17 F17T8			1-67L40K 67 Watt 4000K LED		5H	20-Ga 304SS; Brushed	PM <sup>^†</sup>	Pendant Mount (damp locations only) suspension hardware by others
<b>3' Lengths</b>			1-67L50K 67 Watt 5000K LED		PXH	20-Ga 316SS; Painted	IP65***	UL certified IP65 Listing (Ceiling Mount)
2-21 F21T5			1-90L30K 90 Watt 3000K LED		XH	20-Ga 316SS; Brushed	TR	Tamper Resistant Torx with center pin fastener
2-25 F25T8			1-90L35K 90 Watt 3500K LED				▲ n/a with 347V * Option n/a with 2' fixtures with LED or F21T5 lamps ** n/a with KO options ^ n/a with IP65 options † Consult factory for pendant mount hole locations. ‡ 347V available only with F25T8/F32T8 Lamps ▲ Add .375" to overall length ▼ n/a with LED	
<b>4' Lengths</b>			1-90L40K 90 Watt 4000K LED					
1-45L30K 45 Watt 3000K LED			1-90L50K 90 Watt 5000K LED					
1-45L35K 45 Watt 3500K LED			2-28 <sup>▲</sup> F28T5					
1-45L40K 45 Watt 4000K LED			2-32 F32T8					
1-45L50K 45 Watt 5000K LED			2-54 F54T5HO					
1-67L30K 67 Watt 3000K LED								
1-67L35K 67 Watt 3500K LED								
1-67L40K 67 Watt 4000K LED								
1-67L50K 67 Watt 5000K LED								
1-90L30K 90 Watt 3000K LED								
1-90L35K 90 Watt 3500K LED								
1-90L40K 90 Watt 4000K LED								
1-90L50K 90 Watt 5000K LED								
2-28 <sup>▲</sup> F28T5								
2-32 F32T8								
2-54 F54T5HO								
			<b>Ballast/Driver Type</b>					
			DCC Dimming Constant Current					
			IS Elec <10% THD Instant Start (T8)					
			RS Elec <10% THD Rapid Start (T5, T5HO, T8)					
			SB Specified Ballast					
			<b>Ballast/Driver Quantity</b>					
			1 One					
			2 Two					



www.kenall.com | P: 800-4-Kenall | F: 262-891-9700 | 10200 55th Street Kenosha, Wisconsin 53144, USA  
 This product is able to comply with the latest domestic preference legislation, such as the Buy American Act (BAA), Trade Agreement Act (TAA), Build America, Buy America Act (BABA), and others. It may be covered by patents found at [www.kenall.com/patents](http://www.kenall.com/patents). Content of specification sheets is subject to change; please consult [www.kenall.com](http://www.kenall.com) for current product details. ©2024 Kenall Mfg. Co.

A brand of Legrand

**ENVIROSEAL™**  
Food Processing Luminaires

For additional photometry, go to [www.kenall.com](http://www.kenall.com)

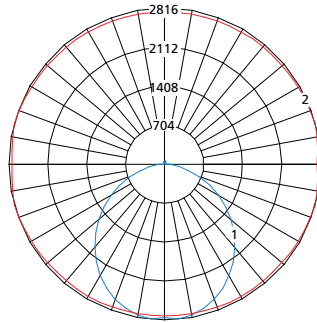
**FES SERIES**

**PERFORMANCE**

Lamp Type	Initial Delivered Lumens		Input Power (W)	Drive Current (mA)	Estd. L70 LED Life (hrs)
	@ 25°C (lm)	Efficacy (lm/W)			
45L30K	4,819	98	49	100	80,000
45L35K	4,968	101			
45L40K	5,138	105			
45L50K	5,273	108			
67L30K	7,373	101	73	75	80,000
67L35K	7,601	104			
67L40K	7,860	108			
67L50K	8,067	111			
90L30K	9,366	97	97	100	60,000
90L35K	9,655	100			
90L40K	9,985	103			
90L50K	10,248	106			

Displayed information above is for PP lens type. Info subject to change. Visit [www.kenall.com](http://www.kenall.com) for IES files and additional information.

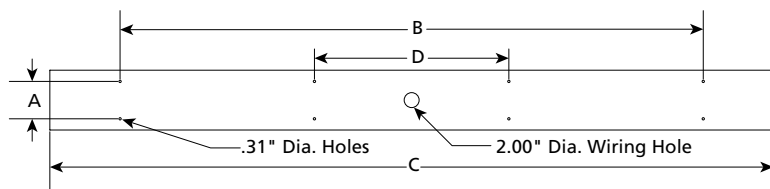
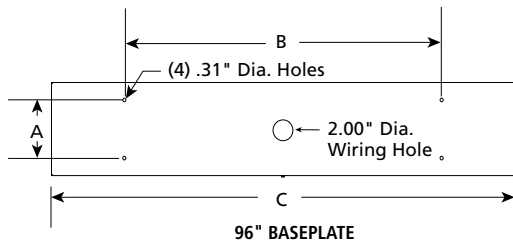
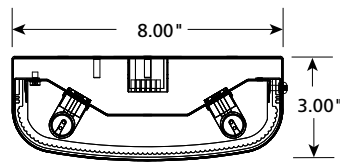
Model: FES8-48-67L40K-DCC-DV-2H-PP



Max Candela = 2816 Located At Horizontal Angle = 15, Vertical Angle = 5

- 1 - Vertical Plane Through Horizontal Angles (15 - 195) (Through Max. Cd.)
- 2 - Horizontal Cone Through Vertical Angle (5) (Through Max. Cd.)

**DIMENSIONAL DATA**



**DIMENSIONAL DATA (IN INCHES)**

	A	B	C	D
FES824 – T5	5.00	16.00	23.13	
FES824 – T8	5.00	16.00	24.75	
FES836 – T5	5.00	20.00	35.00	
FES836 – T8	5.00	20.00	36.75	
FES848 – T5	5.00	32.00	46.75	
FES848 – T8/LED	5.00	32.00	48.75	
FES896 – T5	5.00	78.00	92.87	26.00
FES896 – T8	5.00	78.00	96.78	26.00



[www.kenall.com](http://www.kenall.com) | P: 800-4-Kenall | F: 262-891-9700 | 10200 55th Street Kenosha, Wisconsin 53144, USA  
This product is able to comply with the latest domestic preference legislation, such as the Buy American Act (BAA), Trade Agreement Act (TAA), Build America, Buy America Act (BABA), and others. It may be covered by patents found at [www.kenall.com/patents](http://www.kenall.com/patents). Content of specification sheets is subject to change; please consult [www.kenall.com](http://www.kenall.com) for current product details. ©2024 Kenall Mfg. Co.

A brand of Legrand