

# MILLENIUM STRETCH™

## MLRS12 SERIES – GEOMETRIC/CONTINUOUS RUN

### PROJECT INFORMATION

Job Name \_\_\_\_\_

Fixture Type \_\_\_\_\_

Catalog Number \_\_\_\_\_

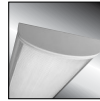
Approved by \_\_\_\_\_

#### PRODUCT FEATURES:

- » Surface mount – wall or ceiling; 12"×48"
- » Continuous row mount luminaires
- » ADA compliant



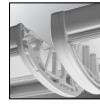
Rounded End Cap



Flat End Cap



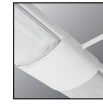
Reveal End Cap



Continuous Row  
Joiner Band



Node "L"  
2-Way



Node "N"  
Inline



Node "T"  
3-Way



Node "X"  
4-Way

#### SPECIFICATIONS

**HOUSING:** Marine grade aluminum. Extruded body with flat or rounded die-cast end caps. TGIC polyester powder coat finished – 5-step pre-treatment. See Ordering Information for finishes. Each pattern run of luminaires consists of one or more "L", "N", "T", or "X" node. See ordering information to specify quantities. NOTE: Contact factory for pattern layout details.

**LENS:** UV-stabilized, high impact extruded pearlescent polycarbonate. Smooth exterior, linear prismatic interior. Nominal thickness .156". Lens securely positioned in body channels and end caps. Lens locked in place with tamper-resistant stainless steel Torx® with center pin fastener.

**NODES:** Marine grade cast aluminum cover mounted to 18-gauge mounting plate. Cover includes knockouts for Wiremold™ entry (not available in "X" 4-way node).

**SOCKETS:** Shock-resistant sockets with internal locking collar to ensure positive lamp retention.

**REFLECTOR:** Full reflector/wire cover – 92% reflectivity.

**HARDWARE:** Four stainless steel, tamper-resistant Torx fasteners secure lens in housing body's lens channel. Electrical Quick Connector supplied (Specify Circuit Qty, see below). Torx screwdriver ordered separately.

**ELECTRICAL:** Available 3500K, 4000K and 5000K color temperatures, 82 CRI. 120-277 VAC, 50/60Hz electrical input with serviceable high power factor electronic, constant-current driver (<20% THD, >0.95 PF). Standard 0-10V dimming with 3-100% range, maximum driver source of 250 µA. Consult factory for fluorescent option.

**SENSOR & CONTROLS:** Optional sensor available with compatible third party controls. To see the full list of compatible controls, [click here](#).

**INSTALLATION:** Standard six-point mounting per fixture recommended.

**WARRANTY:** limited ten (10) year warranty for LED Lamps.

**LISTINGS:** UL and CUL listed for Damp Location only. Suitable for use as a raceway. Consult factory. Suitable for use in continuous row. ADA compliant.



#### ORDERING INFORMATION (Ex: MLRS12GMS-4/48-0/L-0/T-4/X-0/N-R-MB-PP-1-54-RS-1-120)

Model	Fixture Qty	Node L	Node T	Node X	Node N	End Cap*	Finish	Lens	Lamp Type	Driver	Voltage	Options
<b>MLRS12GMS</b>	<b>/48</b>	<b>/L</b>	<b>/T</b>	<b>/X</b>	<b>/N</b>			<b>PP</b>		<b>DCC</b>		
<b>Fixture Quantity (replace "x" with qty)</b>			<b>Finish</b>			<b>Lamp Type</b>			<b>Voltage</b>			
(x)/48 Nominal 48" housing			<b>MW</b> Matte White			<b>45L35K</b> 45 Watt 3500K LED			<b>120</b> 120 Volts			
			<b>MB</b> Matte Black			<b>45L40K</b> 45 Watt 4000K LED			<b>277</b> 277 Volts			
<b>Node L (replace x with qty)</b>			<b>LG</b> Light Gray			<b>45L50K</b> 45 Watt 5000K LED			<b>347</b> 347 Volts (Consult Factory)			
(x)/L Node "L" 2-Way Intersecting			<b>CC</b> Custom Color (Consult Factory)			<b>67L35K</b> 67 Watt 3500K LED			<b>DV</b> 120-277 Volts			
<b>Node T (replace x with qty)</b>			<b>PP</b> Pearlescent Polycarbonate			<b>67L40K</b> 67 Watt 4000K LED			<b>Options</b>			
(x)/T Node "T" 3-Way Intersecting						<b>67L50K</b> 67 Watt 5000K LED			<b>FS</b> Single Fuse & Holder			
<b>Node X (replace x with qty)</b>						<b>90L35K</b> 90 Watt 3500K LED			<b>PH</b> Phillips Head Fasteners			
(x)/X Node "X" 4-Way Intersecting						<b>90L40K</b> 90 Watt 4000K LED			<b>PM</b> Pendant Mount (Max. 3/8NPT stems by others; damp only)			
<b>Node N (replace x with qty)</b>						<b>90L50K</b> 90 Watt 5000K LED			<b>XC</b> Auxiliary Circuit			
(x)/N Node "N" Inline									<b>DCC</b> Dimming Constant Current			
<b>End Caps* (if required)</b>												
<b>R</b> Rounded												
<b>F</b> Flat												
<b>RV</b> Reveal												



www.kenall.com | P: 800-4-Kenall | F: 262-891-9701 | 10200 55th Street Kenosha, Wisconsin 53144, USA

This product complies with the Buy American Act: manufactured in the United States with more than 50% of the component cost of US origin. It may be covered by patents found at [www.kenall.com/patents](http://www.kenall.com/patents). Content of specification sheets is subject to change; please consult [www.kenall.com](http://www.kenall.com) for current product details. ©2022 Kenall Mfg. Co.

A brand of **legrand**

MLRS12GMS-012522

# MILLENNIUM STRETCH™

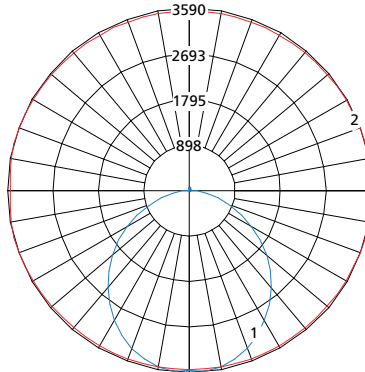
## MLRS12 SERIES – GEOMETRIC/CONTINUOUS RUN

### PERFORMANCE

Lamp Type	Initial Delivered Lumens		Input Power (W)	Drive Current (mA)	Estd. L70 LED Life (Hrs)
	@ 25°C	Efficacy (lm/W)			
45L35K	4666	93	50	94	175,000
45L40K	4975	99	50	94	175,000
45L50K	5173	103	50	94	175,000
67L35K	6689	90	74	66	175,000
67L40K	7131	96	74	66	175,000
67L50K	7416	100	74	66	175,000
90L35K	8548	85	101	94	175,000
90L40K	9113	91	101	94	175,000
90L50K	9477	94	101	94	175,000

Displayed information is for selected luminaires only. Additional wattages and color temperatures are also available. Visit [www.kenall.com](http://www.kenall.com) for additional information.

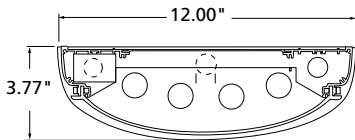
Model: MLRS12-48-F-MW-PP-1-90L40K-DCC-1-DV



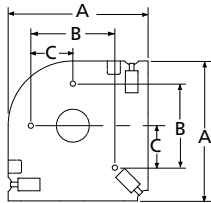
Maximum Candela = 12851 Located At Horizontal Angle = 15, Vertical Angle = 5

- 1 - Vertical Plane Through Horizontal Angles (15-195) (Through Max. Cd.)
- 2 - Horizontal Cone Through Vertical Angle (5) (Through Max. Cd.)

### DIMENSIONAL DATA



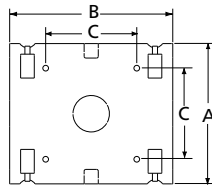
Please provide reflected ceiling plans to factory for dimensional data and factory supplied fixture layout with mounting information. Dimensions A and B are outside dimensions. Dimension C is mounting holes.



#### "L" NODE

Dimensions

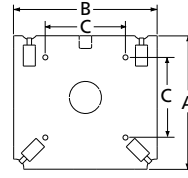
A	B	C
12.33"	5.00"	2.50"



#### "N" NODE

Dimensions

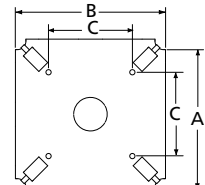
A	B	C
11.70"	10.00"	5.00"



#### "T" NODE

Dimensions

A	B	C
12.33"	12.95"	5.00"



#### "X" NODE

Dimensions

A	B	C
12.95"	12.95"	5.00"

The inline node's internal Wiremold™ ready knockouts allow access to power. A second internal knockout is available for access to raceway(s). The internal knockouts are not visible from the exterior of the node.



[www.kenall.com](http://www.kenall.com) | P: 800-4-Kenall | F: 262-891-9701 | 10200 55th Street Kenosha, Wisconsin 53144, USA

This product complies with the Buy American Act: manufactured in the United States with more than 50% of the component cost of US origin. It may be covered by patents found at [www.kenall.com/patents](http://www.kenall.com/patents). Content of specification sheets is subject to change; please consult [www.kenall.com](http://www.kenall.com) for current product details. ©2022 Kenall Mfg. Co.

A brand of Legrand